

0409 005 083
 DANNY

WALL

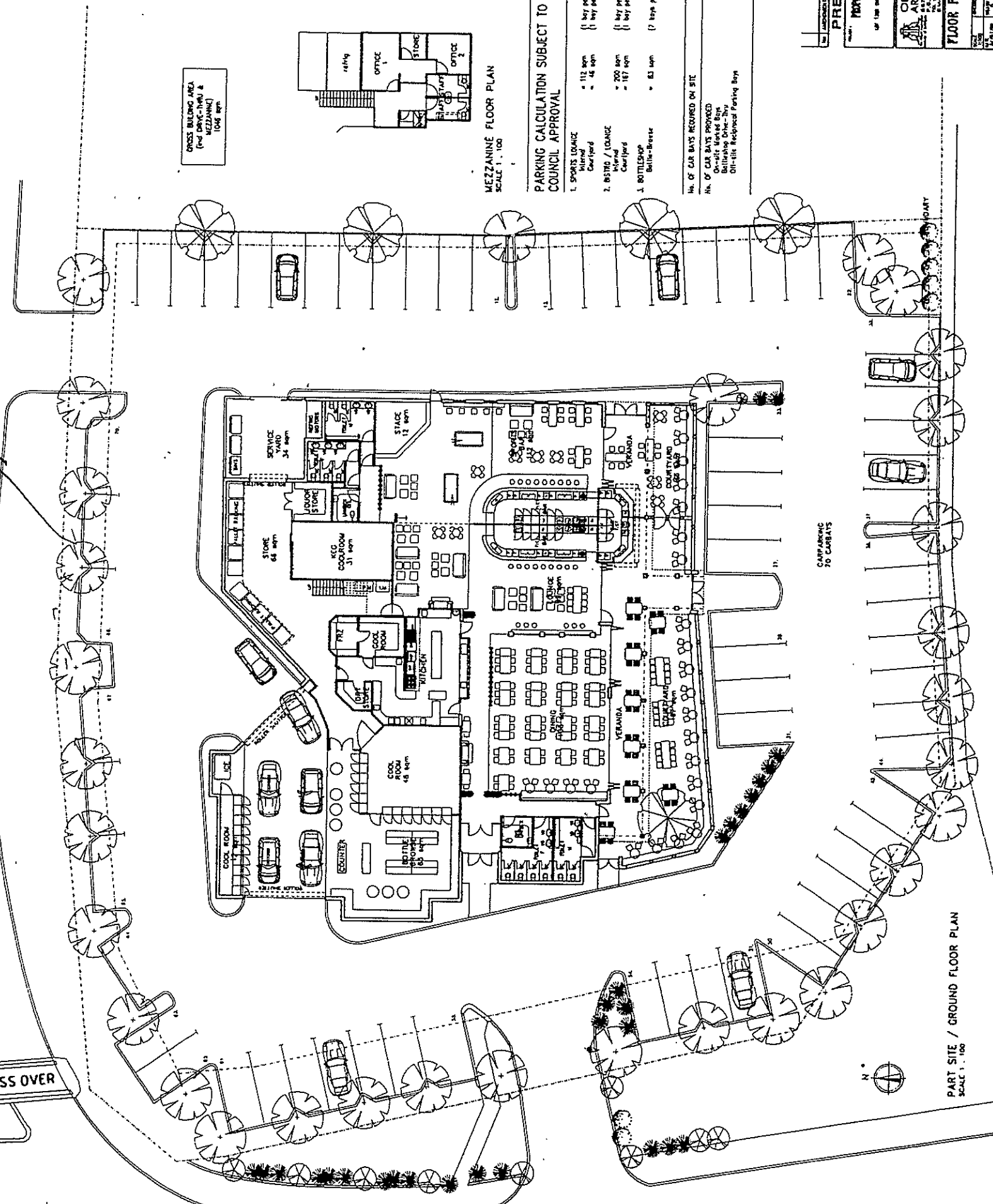
INNESVALE WAY

PEDESTRIAN CROSS OVER

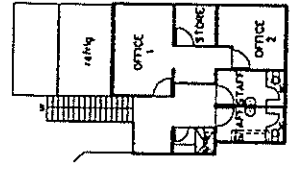
PEDESTRIAN CROSS OVER

CHERITON DRIVE

PEDESTRIAN CROSS OVER



OFFICE BUILDING AREA
 (MEZZANINE)
 1000 sqm



MEZZANINE FLOOR PLAN
 SCALE 1:100

PARKING CALCULATION SUBJECT TO COUNCIL APPROVAL

1. SPORTS LEISURE	• 112 sqm	(1 bay per 3 sqm)	• 38 car bays
Café	• 48 sqm	(1 bay per 5 sqm)	• 9 car bays
2. RESTO./LOUNGE	• 200 sqm	(1 bay per 5 sqm)	• 40 car bays
Café	• 187 sqm	(1 bay per 5 sqm)	• 37 car bays
3. BOTTLING	• 83 sqm	(7 bays per 100 sqm)	• 6 car bays
Bottle-Service			
TOTAL			177 car bays

No. of CAR BAYS PROVIDED ON SITE
 • 177 car bays
 • 70 car bays
 • 107 car bays
 On-site Recycled Parking Bays

PRELIMINARY

PROPOSED DEVELOPMENT INDEX

OF THE "MEZZANINE" OFFICE BUILDING

OLDFIELD KNOTT ARCHITECTS PTY. LTD.
 10/11 WYNDHAM STREET, BALDWIN PARK, SA 5008
 PH: (08) 8353 1111 FAX: (08) 8353 1112
 WWW.OFK.AU

FLOOR PLAN

DATE: 10/10/10
 DRAWN BY: [Name]
 CHECKED BY: [Name]
 PROJECT NO: 07237/P.01

PART SITE / GROUND FLOOR PLAN
 SCALE 1:100